

3 CORPORATE SUITE PACKAGE



CORPORATE SILVER SUITE

HEART-STOPPING ACTION ALL RACE LONG

The Corporate Silver Suite faces almost 50 percent of the South Track. Catch the superb maneuvers and overtaking in a fully air-conditioned setting. Feel the race temperatures rising and never miss a beat of the action too from the flat screen monitors broadcasting the race in real time.

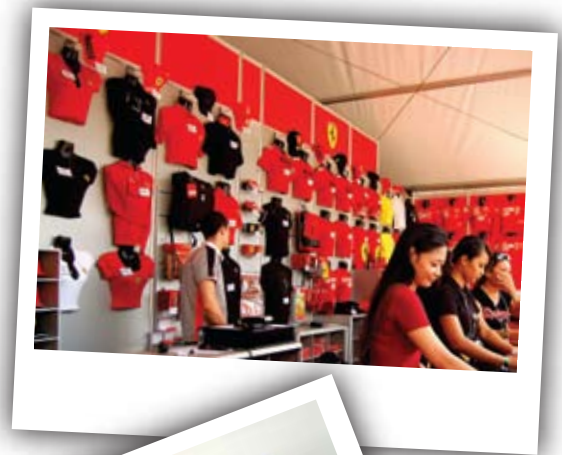
PRICING:

Silver Suite (40 person amenities)

CS1, CS3, CS5, CS7, CS9, CS11 & CS13 **RM250,000**

Privileges include:

- Superb view of South Track
- Forty (40) two-day Passes admission to Corporate Suite & Mall area
- Ten (10) complimentary PA1 parking
- Forty (40) F12009 caps & collared T-shirts
- Complimentary Official Programme (Sunday only) and ear plugs (daily)
- Fully air-conditioned suite
- Private restroom attached
- F&B includes Brunch & Hi-tea
- Free flow of soft drinks, beer & mineral water
- 27 inch flat screen monitors (4 units)
- Access to Malaysian GP Concert



CORPORATE SILVER SUITE

